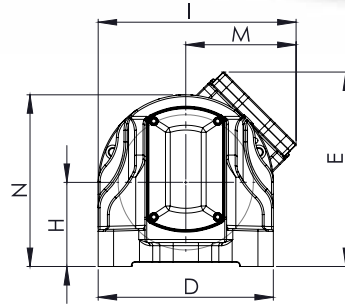
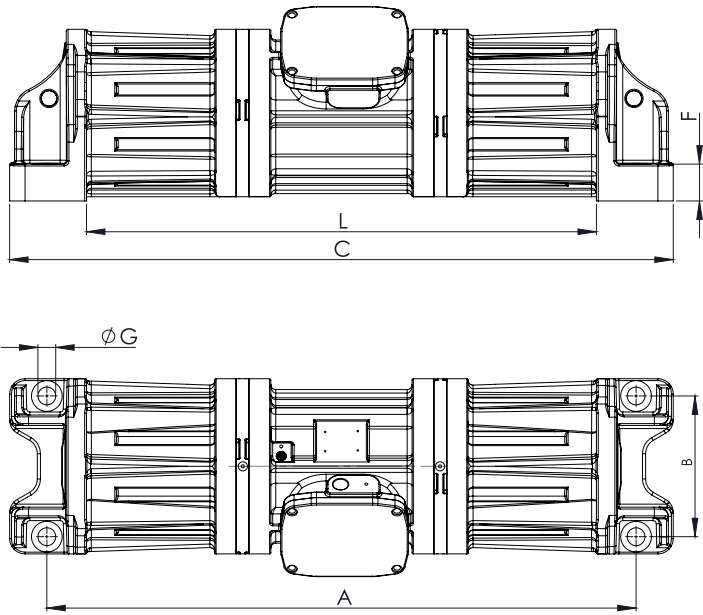




# SV - Long Vibrator - 50Hz / 60Hz



| Wm (kgcm) |       | Model               |                     | Poles | Centrifugal Force (kg) |       | rpm   |       | Weight (kg) |      | ELECTRICAL SPECIFICATIONS |      |                            |      |                  |                |
|-----------|-------|---------------------|---------------------|-------|------------------------|-------|-------|-------|-------------|------|---------------------------|------|----------------------------|------|------------------|----------------|
|           |       |                     |                     |       |                        |       |       |       |             |      | Input Power (kW)          |      | Nominal Current A max. (Y) |      | Ia / In (Ampere) |                |
| 50Hz      | 60Hz  | 50Hz                | 60Hz                | n°    | 50Hz                   | 60Hz  | 50Hz  | 60Hz  | 50Hz        | 60Hz | 50Hz                      | 60Hz | 50Hz                       | 60Hz | Metric           |                |
| 278.6     | 193.4 | MVE 3502/15D-SV-75A | MVE 3502/18D-SV-75A | 4     | 3,500                  | 3,502 | 1,500 | 1,800 | 180         | 170  | 2.2                       | 2.6  | 4.3                        | 4.33 | 6.5              | 3/4" NPT 110°C |
| 278.6     | 193.4 | MVE 3502/15D-SV-75D | MVE 3502/18D-SV-75D | 4     | 3,500                  | 3,502 | 1,500 | 1,800 | 180         | 170  | 2.2                       | 2.6  | 4.3                        | 4.33 | 6.5              | 3/4" NPT 110°C |

| Model               |                     | DIMENSIONAL SPECIFICATIONS (mm) |       |       |     |       |    |       |     |       |    |     |     |     |       |       |
|---------------------|---------------------|---------------------------------|-------|-------|-----|-------|----|-------|-----|-------|----|-----|-----|-----|-------|-------|
|                     |                     | Fig.                            | C     | M     | A   | B     | ØG | Holes | D   | E     | F  | H   | I   | L   | N     | Screw |
| MVE 3502/15D-SV-75A | MVE 3502/18D-SV-75A | A                               | 1,080 | 179.5 | 959 | 229   | 29 | 4     | 285 | 316.5 | 60 | 137 | 322 | 830 | 279.5 | M27   |
| MVE 3502/15D-SV-75D | MVE 3502/18D-SV-75D | A                               | 1,080 | 179.5 | 959 | 241.3 | 20 | 4     | 285 | 316.5 | 60 | 137 | 322 | 830 | 279.5 | M18   |

## SV - LONG VIBRATOR

|                 |  |
|-----------------|--|
| APPLICATION     | Vibrating screens, feeders/conveyors and dewatering screens for quarry, mining, recycling and other sectors  |
| PROBLEM SOLVING | Acts as a structural member of the machine: it eliminates the crossbeam usually needed to support standard vibrating motors. The centrifugal force acts directly on the screen walls, reducing fatigue stress on the entire structure. |

## FEATURES

|                     |   |
|---------------------|---|
| INPUT VOLTAGE       | 220-240 / 380-415 V, 290-300 / 500-525 V, 330 / 575 V, 220-277 / 380-480 V, 230 / 460 V |
| AMBIENT TEMPERATURE | -20°C/40°C as standard, -20/55°C on request   |
| IP                  | 66  |
| THERMAL PROTECTION  | Thermistor PTC 130°C  |
| INSULATION CLASS    | F   |
| OPTIONS             | Greased for life<br>2 and 6 poles available on request                                  |

This information is furnished without warranty, representation, inducement or license of any kind. It is accurate to the best OLI knowledge or is obtained from sources believed to be accurate. OLI thereof